



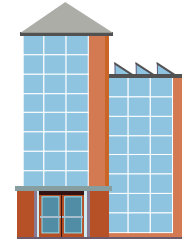
## Word Cards (1)

*Action for Life*

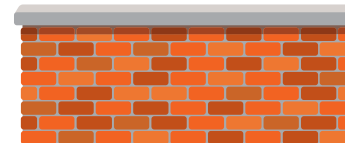
LESSON  
**3**



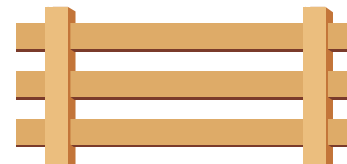
**Building**



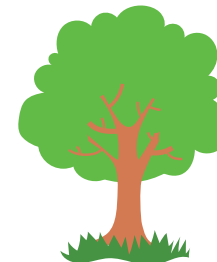
**Wall**



**Fence**



**Tree**



Photocopy, cut  
and laminate for  
Lesson 3



One set = 16 *Symbol Cards* and  
16 *Picture Cards*.

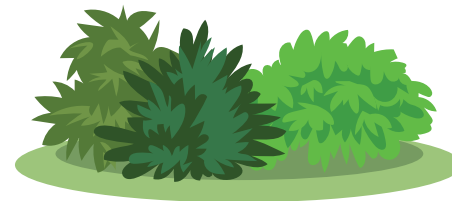
Use a full set, or a fraction of a  
set for each pair, depending on  
time available and appropriate  
level of challenge.



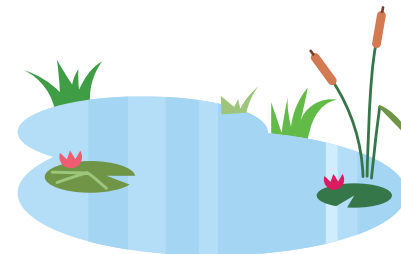
Field



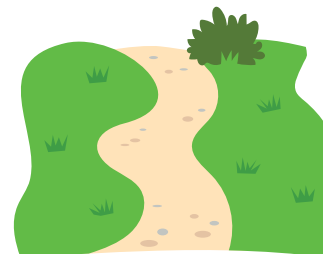
Bushes



Pond



Footpath



Photocopy, cut  
and laminate for  
Lesson 3



One set = 16 *Symbol Cards* and  
16 *Picture Cards*.

Use a full set, or a fraction of a  
set for each pair, depending on  
time available and appropriate  
level of challenge.



## Word Cards (3)

*Action for Life*

LESSON  
**3**



**Stream**



**Tree Swing**



**Seat**



**Wild Animals**



Photocopy, cut  
and laminate for  
Lesson 3



One set = 16 *Symbol Cards* and  
16 *Picture Cards*.

Use a full set, or a fraction of a  
set for each pair, depending on  
time available and appropriate  
level of challenge.



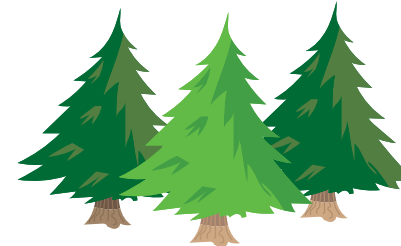
Playground



Tree stump



Forest



Steep slope



Photocopy, cut  
and laminate for  
Lesson 3



One set = 16 *Symbol Cards* and  
16 *Picture Cards*.

Use a full set, or a fraction of a  
set for each pair, depending on  
time available and appropriate  
level of challenge.